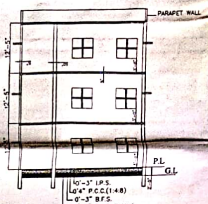
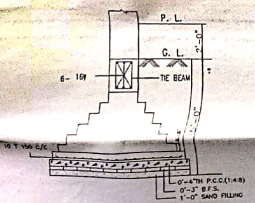


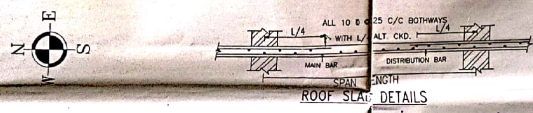
FRONT ELEVATION



SECTIONAL ELEVATION AT X-X

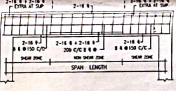


BRICK (RAFT) FOUNDATION DETAILS

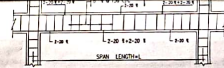


ROOF SLAB DETAILS

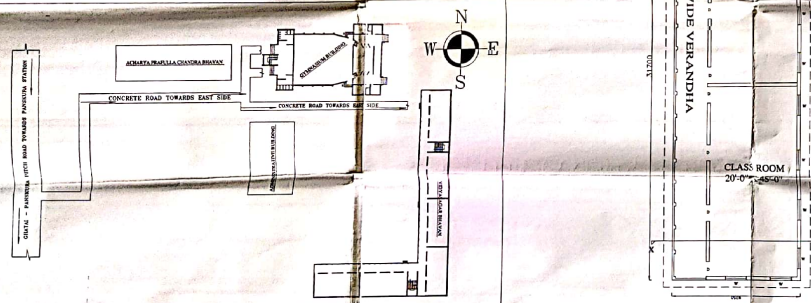
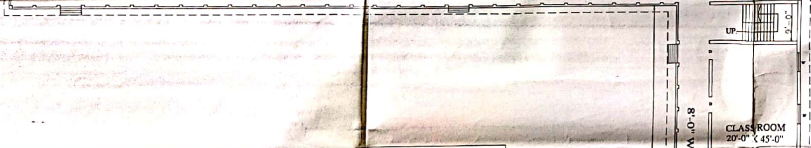
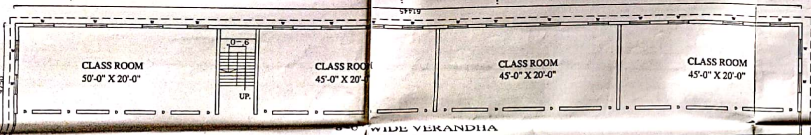
SCHEDULE OF OPENINGS		
NO.	SIZE	HEIGHT
DOORS	10'0"	7'0"
WINDOWS	11'6"	4'0"



LONG SECTION OF R.C.C TIE BEAM (250X350)



LONG SECTION OF R.C.C TYPICAL FLOOR BEAM (250X300)



GROUND, 1ST & 2ND FLOOR PLAN

SCALE-1:100

SITE PLAN
SCALE-1:400

DETAILS DRAWING FOR GR., 1ST. & 2ND FLOOR OF
THREE STORIED BUILDING OF VIDYASAGAR BHAWAN
AT PANSKURA BANAMALI COLLEGE AT PANSKURA
ON PLOT NO - 1597, 1601, 1602 & 1603, MOUZA - KANAKPUR
WARD NO - 01, P.S. - PANSKURA, DIST. - PURBA MEDINIPUR
WEST BENGAL

AREA STATEMENT	
TOTAL LAND AREA = 179 DEC.	= 7253.160 SQM.
GROUND FLOOR PLINTH	
FIRST FLOOR	AREA:- 908.164 SQM. = 9772 SQFT.
SECOND FLOOR	AREA:- 908.164 SQM. = 9772 SQFT.

SIGN. OF SAE:-	APPROVED BY:-
SIGN. OF ENGINEER:-	SIGN. OF AUTHORITY:-

22 OCT 2013